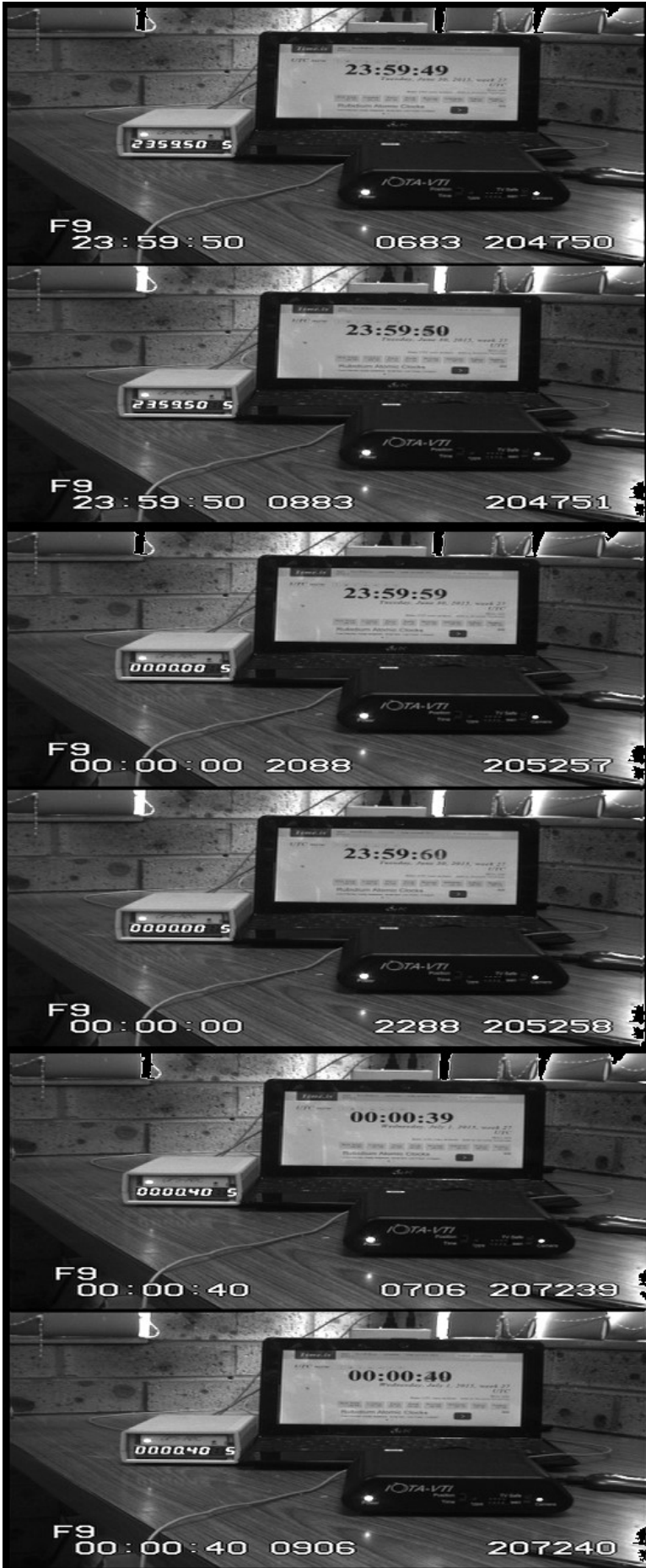


# Timels Delay at 2015 Leap Second

[www.timeis/UTC](http://www.timeis/UTC)



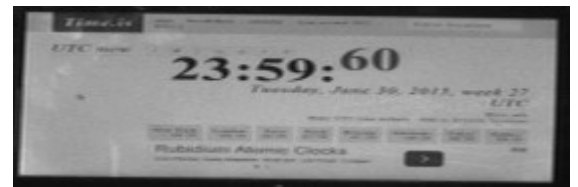
The insertion of the 2015 leap second was observed using the Timels NTP web service as well as with IOTA-VTI and GPS-ABC.

The video can be observed here...

<https://youtu.be/18xgUg0fkW8>

The PC is an Asus eeePC connected via wireless to my modem/router. Alas I did not record what Timels reported as the NTP delay.

The Timels delay in changing seconds was observed to be about 80 to 90 milliseconds throughout the video test, except for the special leap-second display where the 60 was seen to “leap”.



The delay for the 60<sup>th</sup> second was 228 milliseconds. I speculate that this special second display required more processing effort which resulted in the longer than normal delay.

DaveGault

[kuriwaobservatory.com](http://kuriwaobservatory.com)